



ADIDAS MANCHESTER MARATHON 2025



SUPPORTER AND WEEKEND GUIDE

FRIDAY 25 – SUNDAY 27 APRIL

WELCOME

Looking to make the most of the largest ever adidas Manchester Marathon EVENT WEEKEND this year? Whether you're taking part, cheering from afar or joining 140,000 supporters on route, find information and tips to make it an unforgettable experience. You can also use our **SUPPORTER HUB** for more on the day resources including interactive walking maps on the route.

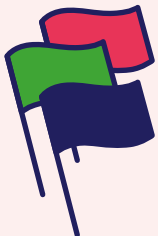


TOP SUPPORTER TIPS



PLAN YOUR JOURNEY

Trams are the best way to get round the route. Check out the Transport for Greater Manchester website to plan your journey. Check your journey [HERE](#).



AGREE ON A MEETING POINT

Participants will exit the finish area approximately 500m after crossing the finish line. This area will be very congested - with poor phone signal likely - so we suggest meeting loved ones at one of the coloured flags on Oxford Road (after the Mancunian Way Bridge) which continue up to Charles Street. You can then move on to one of the suggested locations on our [SUPPORTER HUB](#)



BE PREPARED FOR ALL WEATHERS

Think sun hats AND umbrellas. It is Manchester after all.



MAKE PERSONALISED SIGNS AT ADIZERO: FOR THE FAST

adidas will be hosting the ultimate pre-event space to help you get ready for the big day. Drop by, personalise your sign and head out to support your family and friends. **Where:** Impossible, 36 Peter St, Manchester M2 5QR



TAG US

Share photos and videos on social media by tagging us using **@ManchesterMarathon** and **#ManchesterMarathon** so we can reshare your amazing pictures!



GET NOTIFIED

Participants can nominate one supporter to receive a text when they're 2 miles from the finish line. Find out more [HERE](#).



DEANSgate INTERCHANGE



Head to Deansgate Interchange to check out the adidas x Made Running cheer zone. Complete with a DJ, this is a party not to be missed.



NEAREST TRAM:

DEANSgate-CASTLEFIELD

STRETford

Home of Old Trafford and a foodie haven, supporters can see participants between miles 5 and 7 in Stretford and near mile 21.



NEAREST TRAM:

STRETford

SALE

Sale and neighbouring Sale Moor is a friendly community full of lively local support. Participants pass through Broad Road in Sale Moor between mile 18 and 19 of the course, the infamous 'Wall'...



NEAREST TRAM:

SALE

HULME

With quick access to the city centre and finish line, catch participants twice in Hulme at around 2 miles and again at 24 miles.

NEAREST TRAM:

TRAFFORD BAR

CHORLTON-CUM-HARDY

Chorlton-cum-Hardy is a leafy suburb known for its independent shops and cafes. The atmosphere here will be truly electric, as participants near the finish line.

NEAREST TRAM: **CHORLTON**

JOIN IN THE ENTERTAINMENT

For more information about entertainment on the route - as well as Charity Cheer Points - visit our [SUPPORTER HUB](#)

ALTRINCHAM

Altrincham is the southernmost point on the course where the participants turn between 12 and 13 miles. There'll be loads of support in this lively market town, including various bands, choirs, and cheer points.



NEAREST TRAM: **ALTRINCHAM**



WHERE TO WATCH IN PERSON

HOW TO FOLLOW THE ACTION

TRACKING GUIDE

There are various ways to track your loved one during the event.



PREDICTIVE TRACKING

Our **predicted tracking service** will be live on event day. Timing mats will trigger when crossed at various points, which update the page when participants reach certain distances. Using pace, the website also predicts their progress onward from that point, giving a reasonable estimate of their finish time. *Note that it could take up to 20 minutes for participants to exit the finish area. Please consider this when planning to meet up after.*

SHARE LOCATION

Please see the 'Share Location' information on this page.

SUPPORTER TEXT ALERT

Our handy text message service alerts a chosen supporter when a participant is 2 miles from the finish line, so they can watch their epic achievement on the live stream. Find out how to sign-up for the service before the deadline **HERE**.

There are plenty of ways to experience the action this year. Check out the options below.

COME ALONG

You'll have an unforgettable in-person experience cheering on the route. Navigate your way easily around the course with our handy **walking maps** and Manchester's public transport.

LIVE STREAM

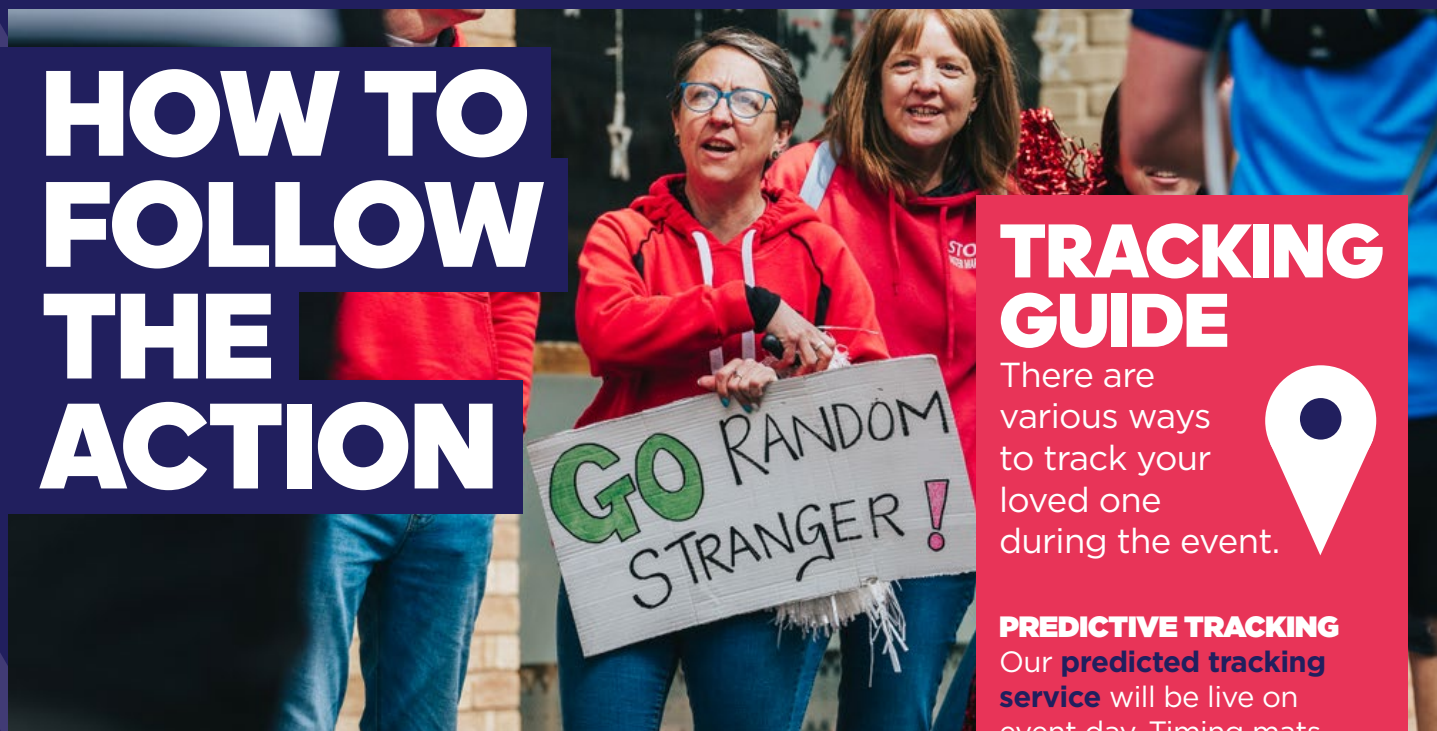
A live video stream will follow the elite races and also capture every finisher crossing the finish line for the whole duration of the event. The Live Stream will be available on Event Day **HERE**.

SHARE LOCATION

Most smart phones can share their location with select people. Using this function will give you an accurate GPS location of your participant on the day. On Apple this is the 'Find My' app where you can link devices. You can also share location on Messenger, WhatsApp and Strava Premium.

GET SOCIAL

The official adidas Manchester Marathon socials will update you over the weekend with the latest pictures, videos and news. Share special messages, videos, or photos using hashtag **#ManchesterMarathon** and we'll re-post as many as possible on our channels.





ADIZERO: FOR THE FAST

THE EXCLUSIVE MANCHESTER MARATHON POP-UP SPACE

APRIL 24TH – APRIL 27TH

@ IMPOSSIBLE, 36 PETER ST., M2 5QR.

ADIZERO: FOR THE FAST

At adidas we believe that through sport we have the power to change lives, and we look forward to celebrating come the 27th of April. Watch out for the **Adizero: For The Fast** pop-up located at Impossible Manchester, 36 Peter St., M2 5QR, open from 24th to the 27th April. The interactive space will host engaging panel discussions, exclusive product ranges, and a range of other exciting activities for you and your loved ones ahead of the big day.

ADIDAS X MADE RUNNING CHEER POINT

Make sure you visit the adidas x Made Running cheer point, located just a short 15 minute walk from **Adizero: For The Fast**, at Deansgate Interchange. Take your adidas decorated signs and head to Deansgate Interchange to cheer on your family and friends.

FIND OUT MORE





WHERE TO EAT

Manchester is a foodie haven, with a huge selection of cafes, restaurants and bars to suit everyone's tastes and budgets. From a quick coffee on route, to a post-marathon pizza party on the stunning Oxford Road finish line, check out our top food and drink spots.

ON THE ROUTE

MANCOCO COFFEE

DEANS_GATE INTERCHANGE **MILE 1**

For those supporting at Deansgate Interchange, grab cheering fuel from the expert brewers at ManCoCo Coffee, who are offering 10% off their menu* for supporters on event day.

**T&Cs apply. Find out more [HERE](#).*

STRETFORD CANTEN

STRETFORD **MILE 9.5 AND 23**

A stone's throw from the tram station, Stretford Canteen is an award-winning, French inspired bistro with plenty of tantalizing options on its menu.

TWO BROTHERS COFFEE

ALTRINCHAM **MILES 12-13.5**

Slightly set back from the incredibly popular foodie haven

that is Altrincham Market, Two Brothers is serving up bangin' brews, hot chocs and more at the halfway point on the course.

GRAPEFRUIT COFFEE

SALE **MILE 18-19**

Start your Sale spectating experience with a beverage from the award winning Grapefruit Coffee, located on the left-hand side outside the tram station.

THE BEAGLE

CHORLTON-CUM-HARDY **MILE 22**

The Beagle in the lively Chorlton-cum-Hardy neighbourhood serve delicious pizzas and pub grub - a favourite in the neighbourhood!

KIM'S KITCHEN AND BAR

HULME **MILES 24-25**

Check out the lively Kim's Kitchen and Bar in Hulme. Offering hot drinks and great sit-down and takeaway brunch options with an optional Caribbean twist.

NEAR THE FINISH



HYATT
REGENCY
MANCHESTER



HYATT
house
MANCHESTER

HYATT HOTELS MANCHESTER

The Laureate restaurant at Hyatt Hotels Manchester will be hosting the official adidas Manchester Marathon pasta party on Saturday 26th April. Fill up on Bolognese, carbonara, vegetarian options and more - for just £20 per person. *Booking and T&Cs apply. Find out more [HERE](#).*

YES MANCHESTER

When it's not hosting the freshest new live music acts, YES Manchester is a cool and casual meet-up spot, with an impressive craft beer roster. Enjoy a free slice of pizza with every pint for medal holders on Sunday 27th April*. **T&Cs apply. Find out more [HERE](#).*

THE GROSVENOR

The Grosvenor is where the fun starts after the event. Located in a stunning old cinema building, the iconic pub offers games, crowd-favourite foods and - rumour has it - one 'helluva party planned for Sunday 27th!

MOTHER MARYS

With its cozy décor and artisanal menu, Mother Marys is the perfect place to enjoy hearty food and Manchester's best beers, wines and craft ales. Marathon participants get a free glass of prosecco Sunday-Monday, as well as free pizza* and a great 2-for-1 drinks deal! **T&Cs apply. Find out more [HERE](#).*



THEATRE, MUSIC AND COMEDY

THEATRE

MARY POPPINS MANCHESTER PALACE THEATRE

FRI 25TH 19:30
SAT 26TH 14:30 19:30

Everyone's favourite governess returns to the stage to bring us a spoonful of sugar!

A KNIGHT'S TALE MANCHESTER OPERA HOUSE

FRI 25TH 19:30
SAT 16TH 14:30 19:30

A rollicking adventure that follows William Thatcher on his quest to become the best knight in the Kingdom.

LIVE MUSIC

JACKSON DEAN NEW CENTURY HALL

FRI 25TH 17:30

Known for powerful vocals and captivating stage presence, Jackson Dean is set to deliver an electrifying series of performances on his UK tour.

SOCIAL DISTORTION ALBERT HALL

FRI 25TH 19:00

Legendary punk rockers Social Distortion are bringing their iconic sound to Albert Hall in April.

MATILDA MANN BAND ON THE WALL

FRI 25TH 19:00

Matilda Mann's upcoming debut album "Roxwell" is a living, breathing portrayal of the bittersweet transition to adulthood.

MANCHESTER COLLECTIVE X CLARK X MELANIE LANE - REFRACTIONS THE BRIDGEWATER HALL

FRI 25TH 19:30

Enter a musical time warp with groundbreaking performances merging the worlds of dance, classical and contemporary music.

FALSE HEADS SOUP, MANCHESTER

FRI 25TH 19:00

Having supported The Libertines on a sold-out tour, the buzz around this young punk-rock band is undeniable. Known for their energetic performances, rock out with False Heads at Soup, Manchester, on 25th April.

THROWN MANCHESTER ACADEMY 2

FRI 25TH 19:30

Swedish heavy weights THROWN will be touring their debut album

EXCESSIVE GUILT, as they continue to make their mark on the metal world. Experience an intense live performance at Manchester Academy 2 on the tour taking over stages by storm.

COMEDY

PAUL SMITH AO ARENA

FRI 25TH 19:30
SAT 26TH 14:30 19:30

Paul Smith is back and better than ever with his latest tour show, "Pablo". Get ready to experience the jaw-aching, laugh out loud comedy.

WORLD COMEDY CLASH 2025

RNCM THEATRE

SAT 26TH - 18:30

London's number one original and longest running comedy clash show returns to Manchester by popular demand with a star-studded, action-packed line up.

FROG & BUCKET COMEDY CLUB

FRI 20:00
SAT 16:00 & 20:00

One of the most renowned comedy clubs in the UK, with the popular Barrel of Laughs shows with multiple comedians on Friday and Saturday.





ATTRACTIONS AND FAMILY FUN



SCIENCE & INDUSTRY MUSEUM

FRI - SUN
10:00 - 17:00

Discover a fascinating world in the heart of the city. Don't miss the family friendly exhibition Operation Ouch! Brains, Bogies and You - a journey through the human body.

CRYSTAL MAZE LIVE EXPERIENCE

FRI 13:00-21:00
SAT 09:00-21:00
SUN 09:00-18:00

Get hands-on with the classic Channel 4 gameshow. Will you and your team conquer the dome, or get locked in long before?

Pre-booking required.

MUSEUM OF TRANSPORT GREATER MANCHESTER

SAT-SUN
10:00 - 16:30

Buses, trams, and much more! Look at

classic vehicles and find out more about the evolution of public transport in Greater Manchester.

PEOPLE'S HISTORY MUSEUM

FRI-SUN
10:00-17:00

A visit to the National Museum of Democracy takes you through the past, present and future of ideas worth fighting for.

CASTLEFIELD VIADUCT

MON-SUN 10:30-16:30

Known as Manchester's 'sky park', Castlefield Viaduct is an elevated park with trees, plants and flowers. Visitors can learn about the viaduct's heritage and the city's relationship with green spaces.

NATIONAL FOOTBALL MUSEUM

FRI - SUN
10:00 - 17:00

Discover football-themed interactive fun for all the family. Don't miss the new exhibition From Pitch to Page - a nostalgic journey through football annuals.

TRAFFORD CENTRE

FRI 10:00 - 22:00
SAT 10:00 - 21:00
SUN 10:00 - 18:00

Enjoy a selection of luxury and high-street offerings from brands including Selfridges, John Lewis, Zara, Michael Kors, The North Face, Wagamama, TGI Fridays and a 20-screen ODEON cinema.

EMIRATES OLD TRAFFORD STADIUM TOUR

VARIOUS TIMES
(BOOKING REQUIRED)

Book a guided tour at the world-famous Emirates Old Trafford, home of cricket in the Northwest and Lancashire Cricket since 1864.

IMMERSIVE GAMEBOX

FRI 11:00 - 21:00
SAT 10:00 - 22:00
SUN 12:00 - 18:00

Experience cutting-edge immersive entertainment, with 30-60 minutes of gameplay using projection mapping, motion tracking, and other clever stuff.

JODRELL BANK

FRI-SUN 10:00-17:00

Uncover the inspirational heritage of Jodrell Bank in the architecturally stunning First Light Pavilion. Experience pioneering stories of the scientists and engineers that made history.

HOME MANCHESTER

VARIOUS OPENING TIMES - PLEASE

CHECK WEBSITE

HOME is Manchester's hub of creativity and discovery, bringing together film, theatre, art and food. Check out the calendar of screenings, exhibitions and more on their website.



SUNDAY **12TH OCTOBER** 2025



**TAKE PART IN
MANCHESTER'S
BIGGEST HALF**

**SIGN UP FOR PRIORITY
ACCESS TODAY**